

汽车电子
博世汽车部件(苏州)有限公司

Automotive Electronics
Bosch Automotive Products (Suzhou) Co., Ltd.



BOSCH

博世 科技成就生活之美





博世汽车部件(苏州)有限公司简介 Bosch Automotive Products (Suzhou) Co., Ltd.

博世汽车部件(苏州)有限公司成立于1999年,是博世5个产品事业部:汽车电子、底盘制动系统、底盘控制系统、汽车多媒体和装备系统及专用设备部的生产运营基地。

2005年,博世汽车部件(苏州)公司获得了TS 16949质量体系认证证书;同时,还被授予“外商投资先进技术企业”的荣誉。位于苏州工业园区星龙街的博世技术中心(苏州)有限公司被江苏省政府授予“重点研发中心”的称号。

2005年,公司的营业额达7.5亿人民币,预计到2006年底将翻一番。目前,公司共拥有1000多名受过良好教育的高技术人才,2006年,预计再招募500名拥有不同专业技术背景的人才,以支持各个事业部的蓬勃发展。

公司最重要的战略之一就是快速客户响应,力争为他们提供高品质的产品和快捷可靠的服务。

2006年5月19日,我们的扩建厂房已顺利竣工,汽车电子事业部将在这里正式运营。汽车电子产品事业部选择苏州作为生产制造基地,对于博世汽车部件(苏州)有限公司今后的发展也是至关重要的。

中国被德国罗伯特博世公司确立为21世纪世界上最为重要的市场。为此,博世汽车部件(苏州)有限公司已赢得总部高层的信心和支持,为顺利开展本地的各个项目奠定了基础。

2006年,我们将继续为中国汽车市场提供高新科技产品,以及最优质的客户服务。我们的标语—**科技成就生活之美**,深刻总结了我们对中国的承诺。

何希德

总经理 博世汽车部件(苏州)有限公司
总经理 博世技术中心(苏州)有限公司

Hans-Karl Hechtel

General Manager
Bosch Automotive Products (Suzhou) Co., Ltd.
Bosch Engineering Center (Suzhou) Co., Ltd.





Bosch Automotive Products (Suzhou) Co., Ltd. was founded in 1999 and is in the meantime the business location for five Bosch Product Divisions: Automotive Electronics, Chassis Systems Brake, Chassis Systems Control, Car Multimedia and PA-ATMO - our machine building Division.

In 2005, Bosch Suzhou has achieved the important Quality System Certification TS 16949. We have been awarded as an Advanced Technology Enterprise. Our R & D center located in Xing Long Street was also acknowledged as Key R&D Center in the region from Jiang Su Province Government.

The turnover reached RMB 750 Mio in 2005 and will be more than doubled in 2006. Meanwhile, we employ more than 1000 high-skilled and well trained associates. In 2006, another 500 highly specialized employees with different technical background will join us, in order to support the growing business of all divisions.

One of the most important strategies of Bosch is to be where our customers are in order to support them with locally produced products as well as fast and reliable services.

On May 19, 2006, our building extension, which is mainly for Automotive Electronics (AE) production, will officially start operation. It is quite essential to Bosch Suzhou that AE made a clear commitment to select Suzhou as the manufacturing location for AE products.

China is considered by Bosch as the most important market in the 21st century worldwide. Bosch Suzhou has achieved clear commitment and support from the Bosch management. This enables us to conduct our activities here in China successfully.

In 2006, we will continuously serve the Chinese automotive market with high-advanced technology products and excellent customer-oriented service. Our company slogan "**Bosch - Invented for Life**" summarizes our vision in China.



穆福朗

汽车电子中国区 副总裁
博世汽车部件（苏州）有限公司

Frank Muehlon

Vice President
Automotive Electronics China
Bosch Automotive Products (Suzhou) Co., Ltd.

世界领先的博世汽车电子技术 Automotive Electronics



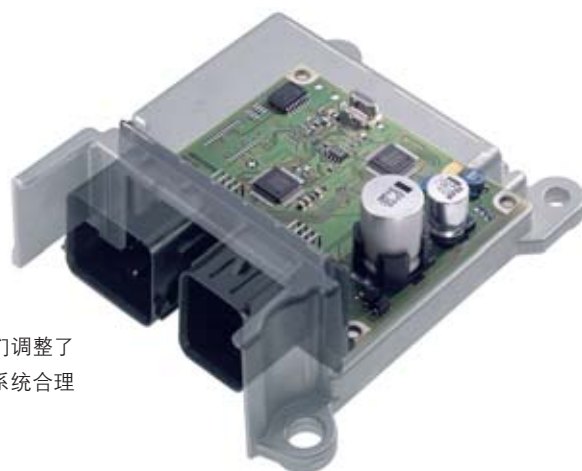
高品质先进解决方案

我们开发和应用乘员安全保障系统，开发驾驶员辅助及转向系统所需的功能和系统部件。此外，我们还开发、制造博世系统中使用的，用以实现机动车辆引擎控制、主动行车安全及能量管理的部件。

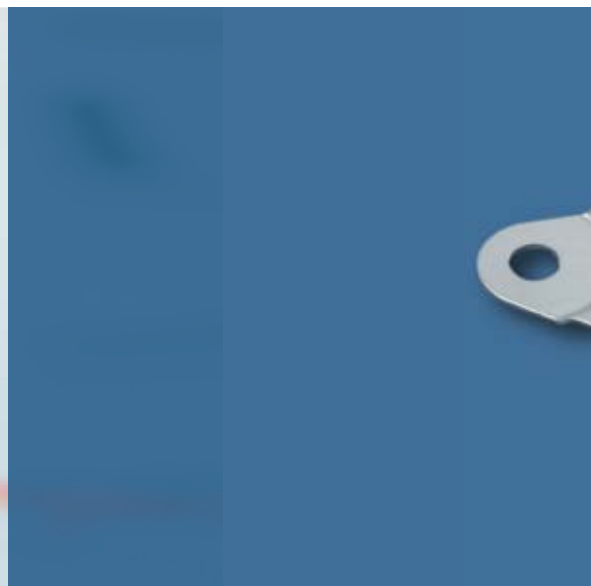
汽车电子技术方面的能力

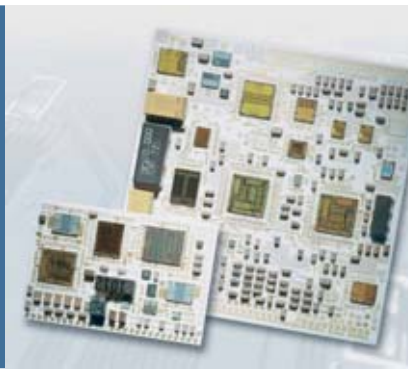
在我们近16,000名员工中有十五分之一的人员从事研发工作。凭借掌握的技术知识，我们调整了技术架构理念，使之适应机动车辆方面的要求。对所有关键半导体技术的设计能力是将系统合理分割成专用电子元件的基础。

我们在这些领域具备的能力使我们进一步实现高度创新，相关示例有：具翻转感应能力的安全气囊控制单元，用于车辆导航和电子稳定程序ESP®的微机械偏航速率感应器，以及用于乘员保护的车辆外围感应器和驾驶员辅助系统。其他的汽车设备供应商也选用博世的半导体元件，包括用于安全气囊控制器和引擎控制的芯片集和传感器，以及用于发电机的二极管和控制器。



我们不断突破极限 —
We push the limits





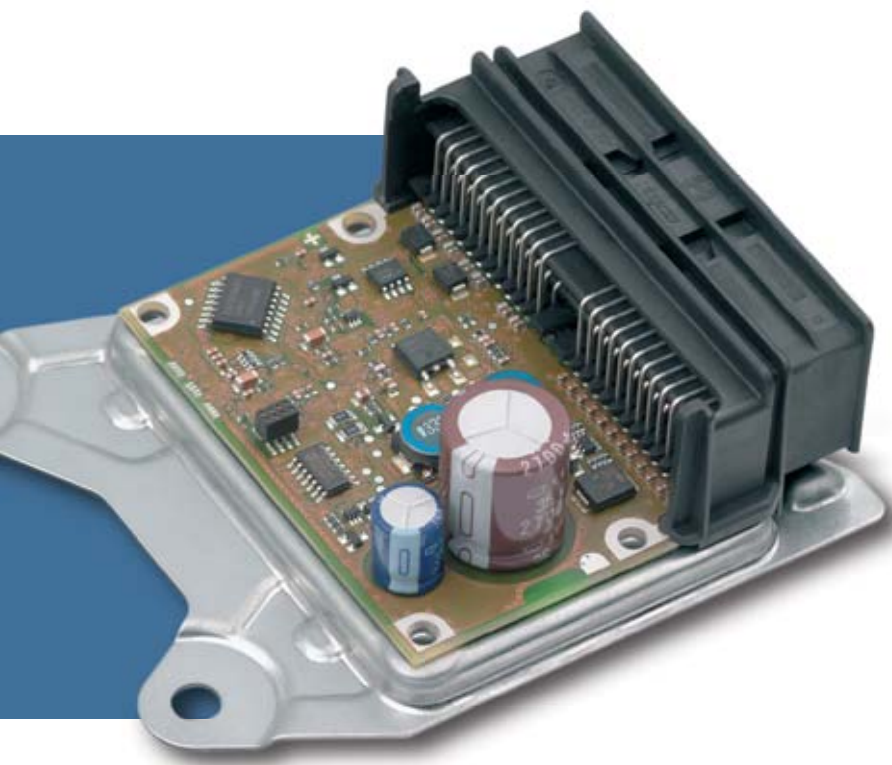
Progressive solutions of high quality

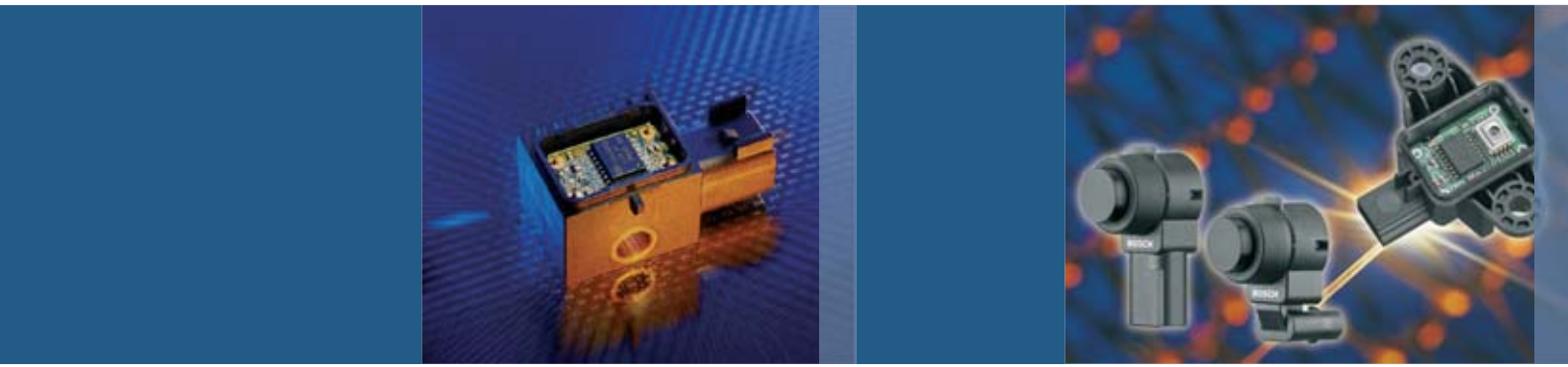
We carry out the development and application of systems for occupant safety as well as the development of functions and system components for driver assistance and steering systems. Additionally we develop and manufacture components which are used in the Bosch systems for engine control, active driving safety and energy management in motor vehicles.

Competent in automotive electronics

Every fifteenth of our approximately 16,000 employees works in research and development. Using our know-how we have adapted the concepts of our equipment to the requirements of motor vehicles. Design capability in all important semiconductor technologies is the basis for the suitable partitioning of the systems into application-specific electronic components.

The competence in these fields enables us to develop innovative products and functions. Examples of this are airbag control units with rollover sensing, micromechanical yaw-rate sensors for vehicle navigation and the Electronic Stability Program ESP® as well as vehicle surround sensors for occupant protection and driver assistance systems. Semiconductor components from Bosch are also used by other suppliers of automotive equipment. These include chip sets and sensors for airbag activation and for engine control as well as diodes and controllers for generators.





遍布全球

我们的工厂遍布欧洲、日本、墨西哥、澳大利亚、美国、中国和韩国，为世界各地的汽车制造商提供电子和机械产品。博世制造网络的其他生产厂应用标准化的装配概念生产控制单元。这些工厂符合ISO/TS 16949认证标准及地区环保标准。博世集团在当地的组织负责客户工厂的系统应用。

World-wide presence

Our factories in Europe, Japan, Mexico, Australia, USA, China and Korea supply electronic and mechanical products to vehicle manufacturers all over the world. Other production facilities of the Bosch manufacturing network produce control units using standardized assembly concepts. The factories are certified in accordance with ISO/TS 16949 and regional environmental standards. The local organizations of the Bosch Group take charge of the systems' application at the customer's plant.



生产 Manufacturing



汽车电子业务部门目前在苏州生产以下产品:

- 安全气囊控制单元
- 防抱死制动系统与电子稳定系统控制单元
- 柴油发动机管理系统控制单元
- 汽车车身电子产品如雨刮电机, 摇窗电机, 车门控制单元以及车身电脑等

我们的产品主要面向中国市场上的各个汽车和零部件生产厂及博世内部其他业务部门, 同时我们也将产品从苏州出口到亚太地区。

Automotive Electronics is currently manufacturing the following products in Suzhou:

- Airbag control units
- ABS and ESP control units
- Motor management control units for Diesel engines
- Body electronics for e.g. wiper-motor, window-lifter, door control units and body computers.

We produce mainly for our internal and external customers in the Chinese market, but also export from Suzhou into the Asia-Pacific region.



匹配工程部简介

Application Engineering for Restraint Electronics



我们致力于为中国客户开发和应用安全气囊电控单元和相应的外围传感器。

由于中国市场上存在大量不同类型的客户，因此我们不断致力于满足客户不同的需求。我们已经在市场上成功地推出几个项目。我们的团队积极上进，努力使自己成为客户眼里具实力且可靠的工程伙伴。

我们的团队包含在“乘员安全”这一产品单元的全球工程网络内。我们负责中国区的客户项目管理，即管理从项目启动到生产开工的整个过程。这还包括技术规范、车辆电子系统的整合以及客户认可程序。此外，我们能根据客户不同的需求为客户分别制定碰撞和误作用实验计划，并能支持现场碰撞和误作用实验。

随后，我们分析信号并进行标定，包括通过测试塔进行验证。在我们的测试实验室，我们对安全气囊系统进行设计和验证测试。

客户至上是我们最重要的价值观之一。我们能够为中国客户提升驾驶安全性和舒适性而感到自豪。

We are responsible for the development and application of Airbag ECUs and the corresponding peripheral sensors for our customers in China.

Due to the high number of different customers in the Chinese market, we work constantly on dealing with this diversity and on meeting the customer requirements. We have already launched several projects successfully into the market and our team is highly motivated to be a competent and reliable engineering partner for our customers.

Our team is embedded in the worldwide engineering network of the product unit Occupant Safety. We are in charge of the customer project management here in China, which means that we manage the entire project from the project kick-off until after start of production. This also includes the specifications, the integration of the electronic system into the vehicle and the release processes of our customers. Additionally we can set up the respective crash and misuse test plans for our customers according to their various requirements and support the crash and misuse tests on site.

Subsequently we analyze the signals and perform the calibration including a validation with our test tower. In our testing laboratory, we conduct design and validation tests for the airbag system.

Customer orientation is one of our highest values and we are proud to make our contribution to improve occupant safety and driver comfort for the Chinese people.



机械设计部简介 Mechanical Engineering

作为设立在中国的ECU机械部分研发中心，我们将致力于完整的ECU开发过程。

自部门2005年成立以来，我们已经取得了不少成就，包括机械设计和中国客户的ECU项目等等。截止到2005年12月，我们已经成功在苏州建立了3D模型设计中心。

除此以外，我们计划将在2006年和2007年分别建立ECU测试中心和PCB板设计部门。

我们将针对客户提供必要的技术支持，就ECU的安装位置提供建议。我们将负责ECU在各种车辆上的匹配应用，例如震动、环境温度和防水要求等等。

凭借博世多年丰富的经验，我们力图保证安装环境满足ECU的技术规范。

我们还将在产品部件本地化过程中为采购部门提供技术支持。

As a local branch of mechanical development center for ECU, our main target is to carry out the whole ECU development process.

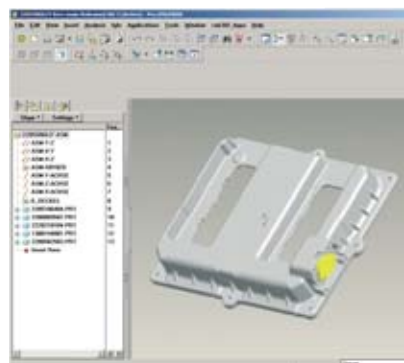
Since the start-up of our activities here in 2005, we have already achieved big progress including engineering design and project management for chinese projects. 3D-CAD has also been implemented successfully in Suzhou since 12/2005.

Besides, we are also planning to start with testing activities in 2006 and PCB layout in 2007.

For our customer, we will provide necessary technical consulting like taking part in the decision-making for choosing the mounting location. We are responsible for all mechanical application of ECUs in different kinds of vehicles, e.g. vibration, temperature and water protection.

With Bosch experience we help to meet ECU specification.

We are also supporting purchasing for localization in terms of technical and release requirements.



质量管理

Quality Management

我们的质量管理体系以国际标准(ISO/TS 16949)和客户需求为基础，涵盖所有相关领域，如工程、销售、制造、采购和物流等。

我们的主要职责有：

- 本地化产品的质量管理
- 生产线上的品质保证
- 供应商质量管理
- ISO/TS 16949 质量体系的执行和维护
- 质量工具的介绍和培训
- 内部审核
- 产品缺陷分析

Our quality management system is based on international standards (ISO/TS 16949) and customer requirements and involves all related areas like Engineering, Sales, Manufacturing, Purchasing, Logistics, etc.

Within our Quality responsibility we take are especially about:

- Quality of our locally produced products
- Assurance of quality within the production line
- Supplier quality management
- ISO/TS 16949 Q-system implementation and maintenance
- Introduction and training on quality tools
- Internal auditing
- Failure analysis of our products



人力资源部

Human Resources

博世集团一直倡导这样的理念：提升信赖度、创造力和创新思维能力以及为员工创造独立工作的空间。博世希望员工通过提出自己的想法积极推动公司目标的实现。员工必须灵活变通,有丰富的经验，以便能够适应技术上的飞速变化和公司的持续发展。

公司的进步离不开人力资源部门系统、持续的努力。人力资源部门通过内部员工培训项目，确保公司员工为未来需要做最佳准备。要将这一认知变为现实，同样离不开完善的企业文化。完善的企业文化有助于促进公司关键目标的实现，以及融合全球多元文化形成统一而独特的博世形象。

有意应聘者，请将中英文简历和1寸免冠照片，学历和相关证书复印件寄往：
苏州工业园区苏虹西路126号博世汽车部件（苏州）有限公司人力资源部
（信封上请注明应聘职位）或e-mail至 hrs.rbac@cn.bosch.com

The philosophy of the Bosch Group has always been to promote trust, creativity and innovative thinking, as well as create space for people to act independently. Associates are expected to be actively involved in the achievement of corporate objectives by bringing their own ideas. Associates must be flexible and have a broad range of experiences to adapt to rapid technology changes and continuous improvement of the company.

The progress of our company is supported by systematic and consistent work of human resources. This work ensures that our associates receive the best possible preparation for future requirements which is strongly supported by our internal associates training programs. To help to bring this knowledge to fruition we also rely on an intact corporate culture. Such a culture helps in a special way to promote commitment to achieving crucial corporate objectives and to integrate the various global cultures to form a unified Bosch identity.

If you are interested to join Bosch, please send your resume to hrs.rbac@cn.bosch.com



地址：江苏省苏州市工业园区苏虹西路126号

邮编：215021

Address: 126 Su Hong Xi Road, Suzhou Industrial Park
Jiangsu 215021, P.R.China

电话 / Tel: +86 (512) 6767 6999

传真 / Fax: +86 (512) 6256 4300

电邮 / E-mail: ae-marketing@cn.bosch.com

<http://www.bosch.com.cn>

